

the Jeweller

Aug/Sept 2012 £7.50

The Voice of The Industry



The National Association of Goldsmiths
Representing Jewellery Retailers since 1894

IJL[®]
INTERNATIONAL
JEWELLERY
LONDON 2012
2 - 5 SEPTEMBER 2012
EARLS COURT LONDON
www.jewellerylondon.com

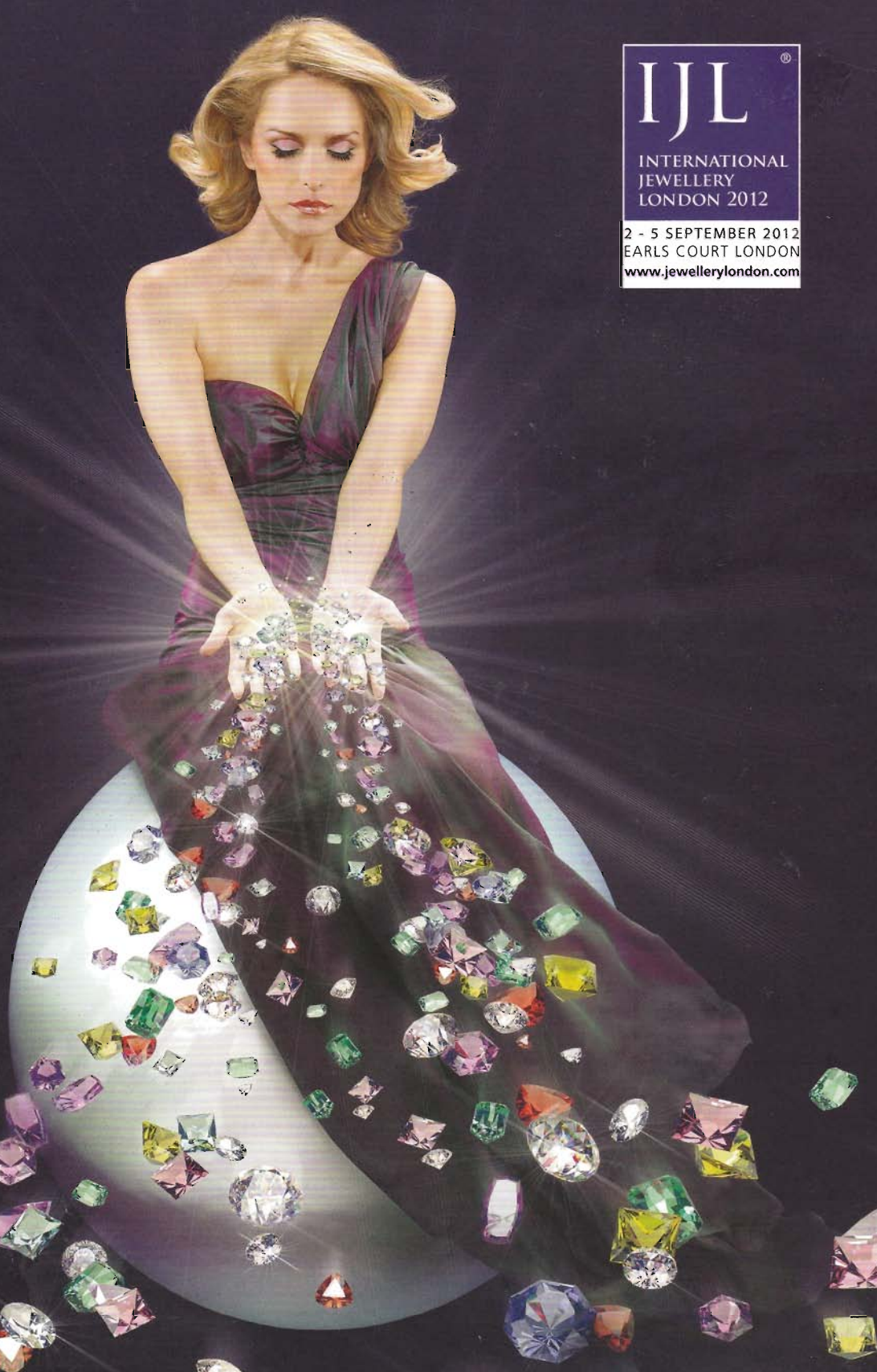
Showing Off
Countdown to IJL 2012

Faking It
The challenge set
by synthetic diamonds

Future Trends
Design directions
for the year ahead



With input from the
British Jewellers' Association



KickStart 2012

The KickStart initiative is an IJL/BJA project to help mentor and show up-and-coming talent. This year's carefully curated selection of KickStarters will once again bring inspirational design to the Design Quarter of the exhibition. "We are particularly impressed with this year's KickStarters. Every single designer selected has shown not only fantastic creativity and skill but also, and importantly, a great commercial awareness," says Val Trotter, director of jewellery retailer Pebbles. Here's a preview of those names to watch.



FLAVIE MICHOU

Flavie developed her design skills in Parisian workshops, making pieces for brands such as Tiffany, Chanel and Cartier to name a few. Now from her London workshop she creates unique yet affordable collections. www.flavie-michou.com



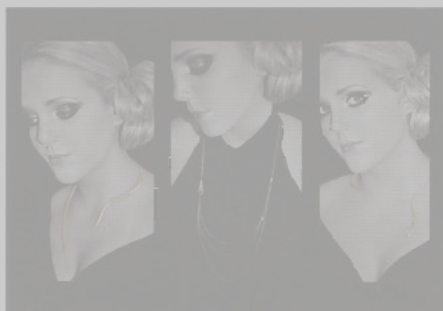
IMOGEN BELFIELD

Through specialised hand carving techniques Imogen creates pieces in textured metals, with an organic twist and incorporating porcelain. Her collections are often embellished with clusters of nuggets, glinting green emeralds, ocean blue sapphires and luxuriant crimson rubies that sit deep in the natural crevices of gold, silver and bronze – all reminiscent of the precarious boulders of coastal landscapes. No stranger to IJL or publicity Imogen was selected for Bright Young Gems last year. www.imogenbelfield.com



MANDANA OSKOU

Mandana's work is inspired by formations, sequences and architectural forms found in minerals and rocks. Since graduating she has developed her organic style and will be launching a new collection at the show. www.mandanaoskou.com



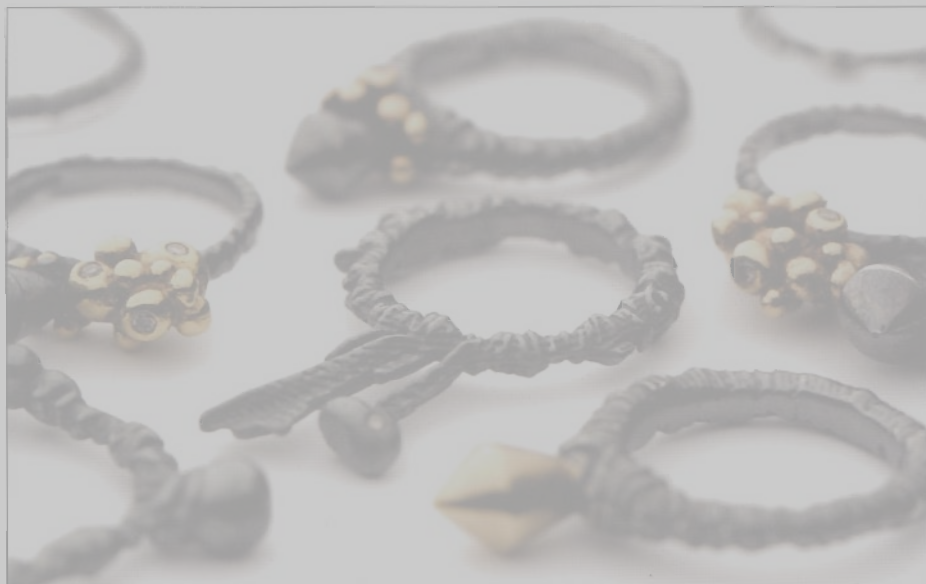
DE ANNA KIERNAN

De Anna trained as a goldsmith from the age of 17 prior to studying architecture at Central Saint Martins. Influenced by the clean lines of modernist architecture and drawing on the natural contours of the female body, her jewellery has a minimalist aesthetic with a focus on subtly framing the body. www.deannakiernan.co.uk



CLARICE PRICE THOMAS

Clarice's jewellery combines her interests in machinery, movements, mechanisms and antiques with an elegant design philosophy. Her debut collection, 'Time', has been heavily inspired by the unseen world inside clocks and watches. Her innovative style has already won her awards this summer. www.claricepricethomas.com



ROS MILLAR

Ros Millar creates diverse ranges including her organically inspired gold and silver cuttlebone cast jewellery and her glamorously gothic looking 'Black & Rose Growth' collection. At IJL she will launch a new collection, 'Meteor', which will gleam with sparkling rose and white rhodium gold plate alongside champagne diamonds discreetly set and hidden within each piece. www.rosmillar.com



LESTIE LEE

Lestie specialises in sterling silver and gold vermeil with coloured stones and precious stones and all her pieces are hand-made in London. Her instinctive relationship with natural materials helps her create these unique pieces. www.lestielee.com



MYIA BONNER

A recent graduate of Middlesex University, Myia's delicate yet bold collections explore her interest in the traditions of diamonds. Myia reinterprets this most coveted stone and redesigns each cut to create her signature facet design. www.myiabonner.co.uk



ANNALOUCAH FINE JEWELLERY

Designer goldsmith Annaloucah creates fine jewellery, working with Fairtrade and recycled precious materials. She has participated in numerous high profile brand collaborations, and is now making her collections available to the trade for the first time, as she takes her brand in an exciting new direction. www.annaloucah.com



QUARTER ANGEL

Jessica Neil will be showing two distinct collections. Firstly the 'Skyline' collection, depicting iconic London views, either made in photo-etched silver with contrasting oxidised detail or made in Perspex, where the etching of this lightweight material is very effective at showing the intricate design details. Quarter Angel's second and newer collection incorporates mixed metals with sparkly stones and feathers. www.quarterangel.com

The KickStart Trend Award

This award was launched at the 2011 IJL show and KickStarter Claire English won the coveted prize – a year's subscription to the innovative trend service Stylesight worth \$8,500 USD.

Nearly a year on, Claire English said: "I found Stylesight to be a marvellous way to interact with the web and do research. I will be bringing some mood boards created in Stylesight to IJL with me this year when I exhibit with my own stand. These two dimensional 'visual mind maps' will enrich and support understanding of what trends my new 'Tooth & Claw' collection feeds into. Jane Boddy, Stylesight's director of Trend Forecasting, said: "At Stylesight, we genuinely feel that IJL is one of the most progressive platforms for jewellery designers to showcase their collections to the media and the industry as a whole. I can't wait to sit on the panel for the 2012 award and see the innovative work from these exciting new designers on the KickStart stand."